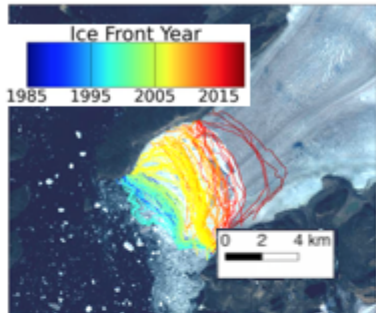


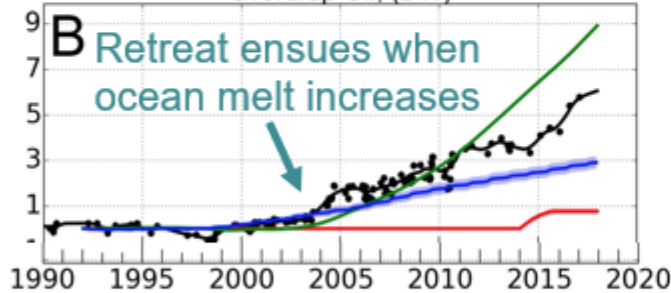


Ocean forcing drives Greenland glacier retreat

Ocean **warming** increased in the mid 1990s



Sverdrup Gl., (DW)

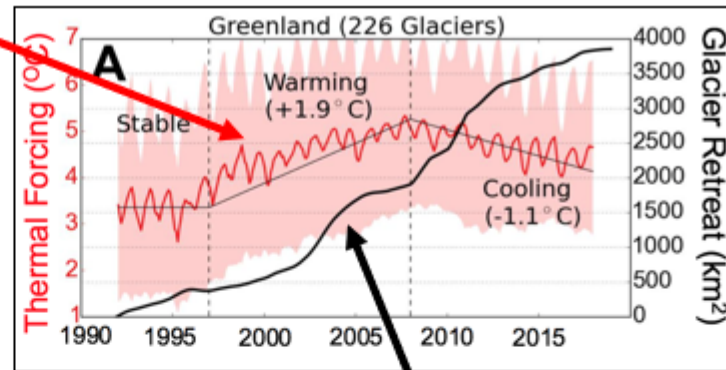


B Retreat ensues when ocean melt increases

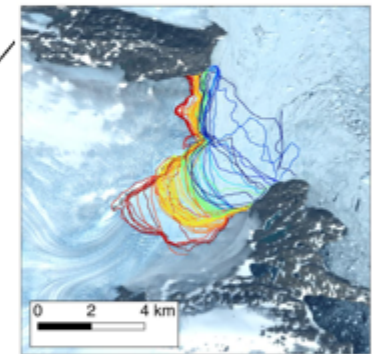
Green = Ice Speed-up
 Black = Retreat caused by:
 Blue = Ocean-Driven Melt
 Red = Surface Melt

Wood, M., et al. (2021). Ocean forcing drives Greenland glacier retreat. Science Advances. DOI: 10.1126/sciadv.aba7282

Retreat of All Greenland Glaciers

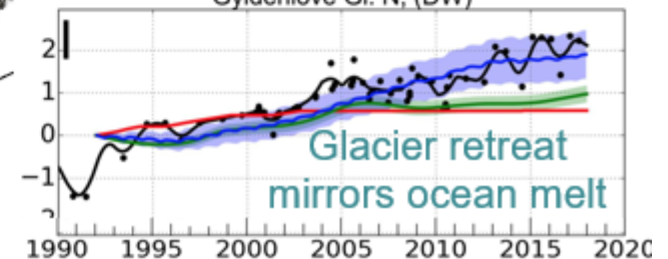


Rapid glacier retreat began *after* regional ocean warmed



Gyldenlove Gl. N., (DW)

Ocean Temps from ECCO and OMG



Glacier retreat mirrors ocean melt